

Definitions in Obstetrics

Gravida: is the number of times the mother has been pregnant. This includes the current pregnancy if your patient is pregnant. *All types of pregnancy, whatever the final outcome.*

Primigravida: A woman who is pregnant for the first time. *Now*

Multigravida: A woman who had more than one pregnancy. *Had 5 Gravida one*

Primipara: A woman who gave birth to one child with fetal weight more than 500gm (life or dead). *pregnancy of 24 w gave Birth*

طبيب **Nullipara:** A woman that all her pregnancies ended with abortion. *all less than 500g, less than 24 w. صاد الشرح*

Multipara: A woman who gave birth to more than one child.

الأسئلة المعتادة
(Q1) كم مرة صلاية ؟
(Q2) كم مرة ولدتهم بعد شهر الحمل ؟

Definitions in Obstetrics

Grand multipara: A women who gave births to more than 4 children. *why? it is considered high risk pregnancy.*

Birth: The complete expulsion or extraction of a fetus with a fetal weight more than 500 gm.

Live birth: A newborn that shows any signs of life after delivery (heart beats, movements, breaths).

Still birth: A newborn that did not show any signs of life after birth.

Neonatal death: Any infant death that occurs before 29 days of life. (early death: during the first 7 days).

Infant deaths: The number of deaths occurring to children less than one year of age (0-364 days).

Abortion => any delivery before 24 w or less than 500g.

More likely to be acquired.
Early 1st week
Late 2nd & 3rd week
why? if it occurred w/in 1st week (early) more likely due to pregnancy complications.

*after 24 w
بنفسه*

*بعد الولادة
وعالولادة
تانه سليم*

جزء منها

Definitions in Obstetrics

between 37W - 42W

Term infant: An infant born anytime after 37 completed weeks of gestation through 42 completed weeks (260 to 294 days).

Preterm infant: An infant born before 37 completed weeks of gestation.
 and after 24W → Exclude Abortion.

Post-term infant: An infant born after completion of 42nd. Week.

Abortus: A fetus or embryo removed or expelled from the uterus with weight less than 500gm or body length of 25 cm (crown to heel) or gestational age of 24 weeks.

Completed Week \Rightarrow 0-6 \rightarrow last day at 12:00 AM.

Pregnant for 24W + 1 day \rightarrow 24W + 1 \rightarrow Add the not completed days to the completed weeks.

Just after delivery till first 24W.
Day 0 =

Definitions in Obstetrics

متى كانت آخر دورة لك؟
متى تظهري؟
Ex: 25/5
Was it 1st or last day of the menstrual?
We need the 1st day!
25/5 + 280

Duration of pregnancy: 280 days (40 weeks) from the first day of the last menstrual cycle in a woman with 28 days regular cycles or 266 days from the day of fertilization.

Defined by the calculated weeks!

Mid cycle Day 14 → Day of Ovulation

Secretory → Fixed 14D.
Proliferative → Variable!

Trimesters of pregnancy: Duration of pregnancy from the last menstrual cycle is usually divided into 3 equal parts:

Day of fertilization
12W + 6D → Completed

Fixed ← **First trimester:** 0 to end of 13 weeks of gestation.

New books say that ends w/ 14 weeks!

Fixed ← **Second trimester:** 14 to end of 27 weeks.

Variable ← **Third Trimester:** 28 weeks till delivery.

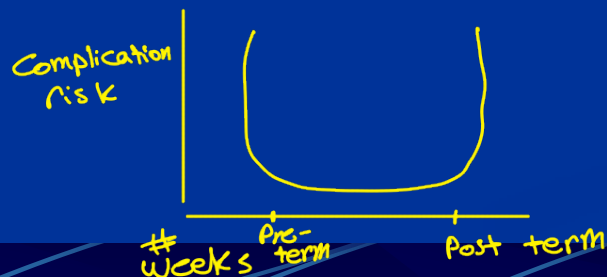
● Classification of term pregnancy

Earlier + late → More liable to complications

The new classification /2018

٣ اقسام من الـ ٧

- **Preterm:** before 36 6/7 ^{٣٦ + ٦} Not Completed by 12:00 AM. ^{≈ 38w}
- **Early term:** 37 0/7 through 38 6/7 weeks ^{≈ 39w}
- **Full term:** 39 0/7 through 40 6/7 weeks ^{≈ 41w}
- **Late term:** 41 0/7 through 41 6/7 weeks ^{≈ 43w}
- **Post term:** 42 0/7 and beyond ^{≈ 44w}



Classification of preterm pregnancy

- Extremely preterm (less than 28 weeks)
- Very preterm (28 to 32 weeks) → Could be 27w+0
الـ باء الـ سبوع الـ 28
- moderate to late preterm (32 to 37 completed weeks)

↳ Again, Earlier Ass w/ ↑ risk of complications.

Terminology and time frame of pregnancy outcomes

		Gestational age from LMP (in weeks and 2 more than Developmental age)																
		2	6	11	20	21	22	23	24†	25	26	27	28	29	37	40	42	
Aspect of fetus & pregnancy	Prenatal development stage	Embryo			Fetus													
	Whether fetus viable	Not viable				(probably not)			(probably)			Viable						
	If vaginal bleeding is observed	Threatened abortion				(probable miscarriage)			Antepartum haemorrhage									
	Onset of spontaneous delivery	Early	Clinical spontaneous						Premature labour				Term	Overdue				
	... and delivered alive	Pregnancy	abortion (aka Miscarriage)						Premature birth				Delivery					
	... but then dies afterwards	Loss											Neonatal death					
	If died before delivery								Stillbirth‡									

† Age of viability was 28 weeks before availability of modern medical intervention, current 50% chance of survival to discharge occurs for 24-25 weeks.

‡ Definition varies by country: Australia 20 weeks, UK 24 weeks, US no standard definition and Canada follows WHO's "Fetal death" at any stage gestation.